



The 4-Berth Campervan.

This guide to our 4-Berth Campervan should answer any questions you have. If not, please feel free to call our helpline on 1300 067 222 and speak to one of our friendly staff.

GENERAL OVERVIEW

Embark on the ultimate adventure with our state-of-the-art automatic diesel Toyota Hi-Ace campervan. Effortlessly navigate and park this vehicle, designed for your convenience. Enjoy a fully equipped kitchen with an induction cooktop which works on both 240 and 12 volts! Relax in a cozy dinette area that transforms into two comfortable bed options. Stay warm with the ducted diesel heating system, perfect for off-grid escapes. Ideal for 2 adults and 2 children, this campervan is your gateway to unforgettable holiday experiences. Don't wait—start your adventure today!

THINGS TO NOTE:

Here are some key points to keep in mind for a safe and enjoyable trip with the 4-Berth Campervan:

- **Off-Grid Definition:** In this context, “off-grid” refers to the need for 240-volt powered sites only.
- **Amenities:** This van does not have a shower, toilet, or grey water tank.
- **Recommendation:** Plan your trip around campsites that provide these amenities.
- **Vehicle Condition:** Check the condition report before leaving.
- **Vehicle Controls:** Familiarize yourself with controls and adjust mirrors before starting your journey.
- **Advisory Stickers:** Pay attention to warnings on the windscreen.
- **Safe Driving Tips:**
 - Tasmania's roads can be narrow and winding, especially in rural areas.
 - Always drive with caution, reduce your speed on unfamiliar or gravel roads, and be extra vigilant for wildlife, particularly at dawn and dusk
 - Keep to the left side of the road.
 - Be aware of the vehicle's height (2.8 meters).
 - Avoid multi-storey car parks and watch out for low clearances such as drive throughs, low awnings and canopies. If the road edge has a slope the top of the van will lean in.
 - Take care when parking and turning, do not cut corners.
- **Windy Conditions:** Reduce speed as taller vehicles are affected by side winds.
- **No Smoking or Pets:** Not allowed in the vehicle.
- **Return Condition:** Clean the interior, place used linen in the shower or a bag, and wash dishes.



Road Safety Advice
for Tasmania

INSTRUCTIONS

THE ELECTRICS:

Our campervan is equipped with a 200-amp lithium home battery and a 2000 W inverter, ensuring you have power wherever you go.

The home battery can be charged in three ways:

1. From the 160W rooftop solar panel when parked.
2. From the vehicle alternator while driving.
3. By plugging into a powered campsite using the 240V lead.

When you're not connected to mains power, you'll rely on the lithium home battery. To use the power points or cooktop, whether plugged in or off-grid, turn on the inverter/charger switch. This will provide mains power, allowing you to use the cooktop or power points off-grid. Use appliances sparingly to conserve battery power and monitor the power level on the Victron energy display, ensuring it stays above 20%. Recharge the battery approximately every third night at a powered site to maintain this level. If you are driving at least 100 km per day this may not be required.

When connected to a powered site with the orange power lead, turn on the inverter/charger switch to charge the home battery and have unlimited use of power point items. **Remember to turn off the inverter/charger switch when not in use.**

Troubleshooting Tips:

1. **No Power:** If you experience a loss of power, first check the inverter/charger switch is on
2. **Circuit Breaker:** If the power system isn't functioning, verify that the circuit breaker under the rear seat is in the up position. If it has tripped, reset it by flipping it back up.
3. **Powered Site Connection:** If you're not getting power from a campsite hookup, check the power source is working. Is the lead connected properly at the van and at the power outlet? Has a circuit breaker tripped at the power outlet or in the van?

THE SWITCH PANEL: Illuminates when each switch is on

Here's a quick summary of the switch panel functions:

- **P (Pump):** Activates the water pump for the sink tap.
- **L (Lights):** Turns on power to all lights, each light has individual switches as well.
- **A (Accessories):** Controls USB and 12-volt outlets / sockets; turning it off disables all accessories.
- **F (Fridge):** Turns on the fridge, an internal thermostat dial is located inside the fridge.



DIESEL HOME HEATING:

Here's a quick guide for using the diesel home heating system:

- **Webasto Switch/Dial:** This controls your ducted diesel-powered heating.
- **Operation:** When stationary, turn the dial to the '2 o'clock' position. Heating will start flowing through the vents below the seat after a few minutes.
- **Vent Clearance:** Make sure the vents are not obstructed.
- **Fuel Usage:** The heater uses fuel from the vehicle's diesel tank at a rate of 1 litre per 10 hours of run time.

INDUCTION COOKTOP:

- **Power Options:** Can be used when connected to a powered site or off-grid.
- **Setup:** Turn on the inverter/charger and cooktop switches.
- **Operation:**
 - Turn on the power switch on the cooktop surface.
 - Select your hotplate.
 - Use the +/- buttons to adjust the heat.
- **After Cooking:** Lower the plate lid.
- **Important Note:** Do not use the plate lid as a chopping board. A chopping board is stored in your kitchen cupboard.

SETTING UP THE BED:

Double Rear Travel Seat:

- Remove the headrests.
- Release the latches on both sides of the seat.
- Grab the seat base and bring it forward towards the front of the vehicle.

SETTING THE BED BACK INTO THE SEAT POSITION:

- Lift the seat base until it clicks.
- Rotate and push the seat towards the back of the vehicle to align and latch.
- Replace the headrests.

OVERHEAD BED: (100kg weight limit).

- Untether the bed base boards and restraint strap.
- Slide the boards into position towards the nose cone.
- Use the mattresses from the rear.
- Access the overhead bed from the lower bed.

BLOCK OUT CURTAINS:

- The van has full block out curtains all around.
- There is a clip-on curtain provided for the front windscreen.

SETTING UP THE TABLE:

- The table is stored behind the driver's seat.
- Place the leg into the hole in front of the back seat.
- Place the table top on the pole.

SWIVEL PASSENGER SEAT:

- Slide the seat forward.
- Grab the release handle on the side and rotate the seat around.
- To return it to the original position, pull it forward, rotate it back until it clips in, and adjust for comfort.
- Important: Do not open the passenger front door if the awning arm is attached. Use the rear side door for entry/exit.

SETTING UP THE AWNING:

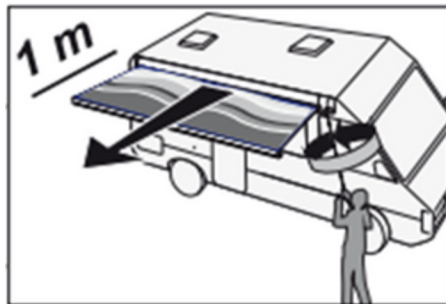
Preparation:

- Important - Ensure the sliding and passenger doors are closed.
- Grab the awning handle from the back of the vehicle.

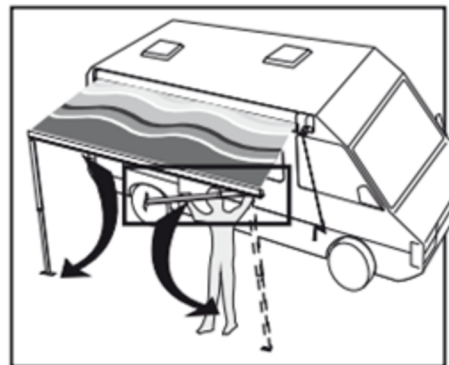


Extending the Awning:

- Insert the awning handle into the awning and wind it out about a metre until it supports itself.



- Pull out the awning legs, rotate them down, and match their height.



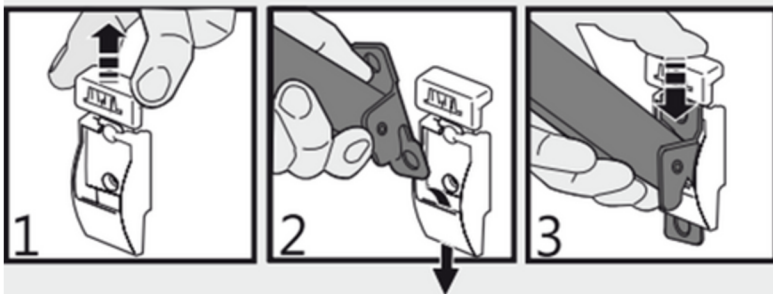
SETTING UP THE AWNING:

Adjusting the Awning:

- Continue winding the awning out, adjusting the legs as you go.
- Set the awning to your desired length and adjust the height.

Securing the Awning:

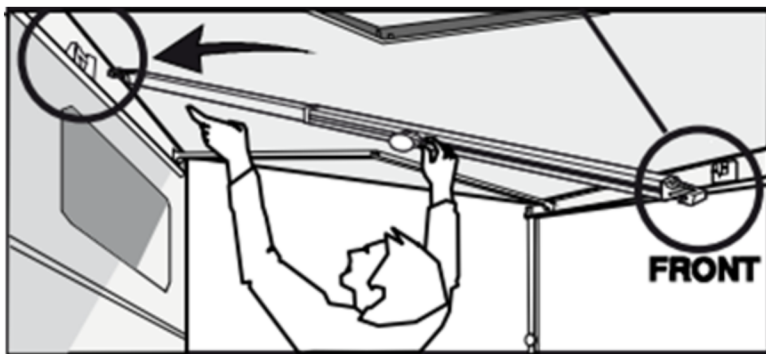
- Place the foot of the awning leg into the locking tab on the side of the vehicle and lock it down.



- Reset the height if needed.

Adding Extra Support:

- Grab the centre brace from inside the vehicle near the top bed.
- Insert the centre brace into the awning for additional support, click it in, and tighten it.



Important Tips:

- Use the awning only for sunshade on calm days.
- Do not leave it extended at night or when you're not with the van.
- Always use the centre brace for added strength.
- You are responsible for awning damage so please take care.

PACKING AWAY THE AWNING:

Remove the Centre Brace:

- Take out the centre brace as you installed it.

Detach the Awning Legs:

- Remove the awning leg from the vehicle mount.
- Lift the tab up and adjust the height to match the other leg.

Wind the Awning In:

- Wind the awning back in to about the metre mark, the same position where you set it up.

Fold the Awning Legs:

- Raise the awning legs, tighten the wing nuts, and fold the foot away so it's flat.
- Insert the awning leg back into the awning.
- Repeat the same process on the other side.

Fully Retract the Awning:

- Wind the awning all the way back in.

Store the Handle and Brace:

- Place the awning handle back in the rear storage.
- Return the centre brace from inside the vehicle near the top bed and ensure it is both clipped in and secured by the Velcro straps for safety reasons

EXTERNAL VEHICLE CONNECTIONS ON YOUR CAMPERVAN:

Water Fill Cap:

- Location: Driver's side, above the rear wheel.
- Filling the Water Tank:
 - Use the key on your set of vehicle keys to unlock the cap.
 - Start with the water pressure on slow and increase as it fills.
 - When water starts squirting out, the tank is full.
 - Lock the cap.

240-Volt Mains Input:

- Location: Next to the water fill cap.
- Usage: Connect the vehicle to mains power at a caravan park.

Butane Storage Box:

- Location: Passenger side.
- Usage: Safe and legal storage for butane cans (if hired as an option).
- Opening: Use the large washer on your set of vehicle keys to open the box.

INDUCTION COOKTOP



LOWER BED SET UP



DRIVING CABIN



SWITCH PANEL



BED IN ROOF



SEATING & KITCHENETTE





**We hope you enjoy your
holiday with us!**